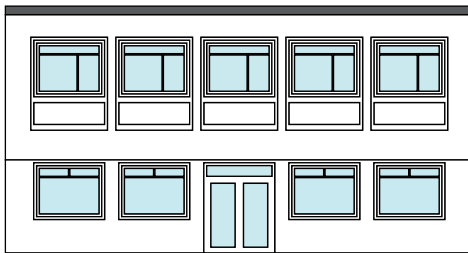
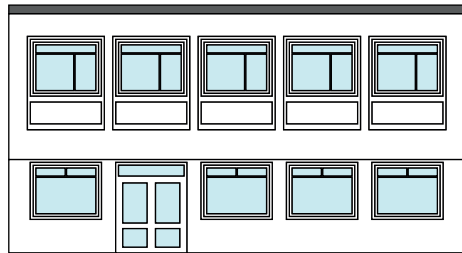


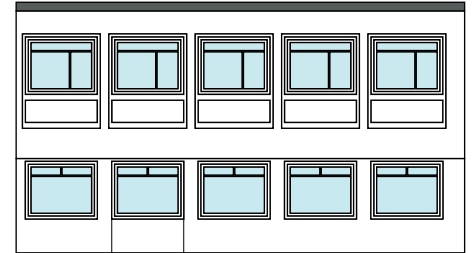
Low Relief Office Block - A



Low Relief Office Block - B



Low Relief Office Block - Window Infill



## Tools Required

Modellers Knife (with a fresh blade)  
Cutting Mat  
Modelling Glue (we recommend Deluxe Materials Roket Card Glue)  
Fine Tip Applicator  
Low-tac Masking Tape  
Clips / Clamps

## Tips

Prior to starting your build, we recommend reading through the instructions to familiarise yourself with the build style of the kit.

We recommend painting any white edges as you remove the components from the sheet to improve the finished look. We advise watercolour paints for the best finish.

The components are held in position using breakout perforations. To remove them, gently pop them out of the main sheet.

Remove each component as it is required to prevent losing or mixing it up with another component.

Ensure that glue is distributed evenly and not too close to the edge as it may ooze out when pressure is applied.

Use low-tac masking tape, clamps and weights to aid the assembly process.

## Office Block A

Components are Labelled in Black

## Office Block B

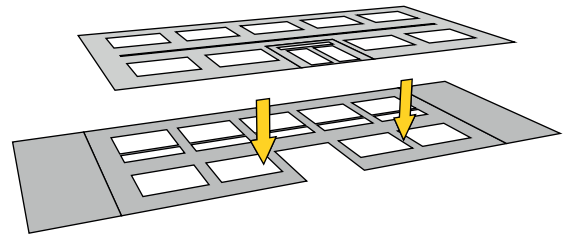
Components are Labelled in Red


The visuals in this instructional manual are for Office Block A. Although Office Block B is slightly different in appearance, we've designed it to be built the same way for ease.

1. Detach Inner Wall A and place it face up on your work surface. Remove the excess card from the notch that's been cut into the wall (this will be used as a guide to position the floor).

We have supplied an alternative door and a window infill option with this kit. To incorporate one of the alternative options, carefully remove the standard door by cutting along the surrounding score line that's been highlighted in yellow for ease.

2. Detach Outer Front and Side Walls. Then glue Inner Wall A into position on the inside of the wall.



-  Ensure that there is even spacing around the window openings and the bottom of the walls are flush with one another.

If you've decided to remove the standard door, now is the time to fit one of the alternative options.

Simply glue the Alternative Door or Window Infill into the standard doors previous position. If you've opted for the window infill turn Component A so that it's face up and glue window infill Part B into position.

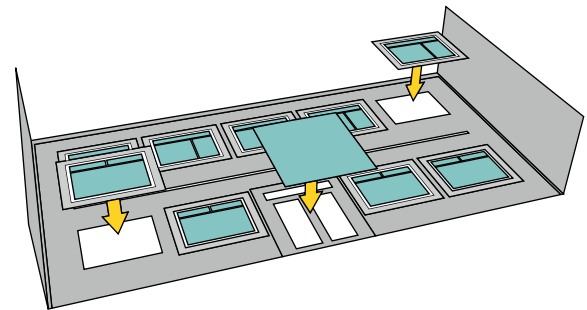
3. Locate the glazing sheet and cut out the windows along the thin outer lines. Then glue each one into position.

-  Block A will require:

1 x Door, 4 x Ground Floor, 5 x First Floor


Block B will require:

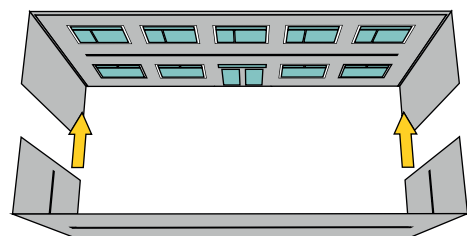
1 x Door, 2 x Ground Floor, 4 x First Floor, 2 x Toilet



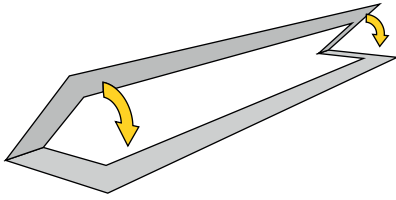
(If you've opted to replace the doors with window infills, an additional Ground Floor Window will be required for each Block).

4. Detach Inner Wall B from the main sheet and remove the excess card from the notches that have been cut into the walls (these will be used as guides to position the floor). Then, glue the tabs to the inside of Component A.

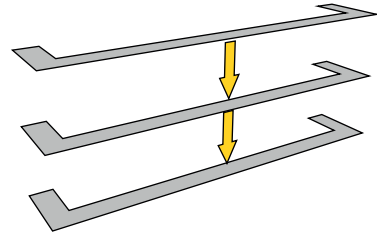
-  The side walls of component A should overhang the back wall by 0.5-1mm.



5. Detach three **Roof Packers** . Then fold each one along the score line and glue together.

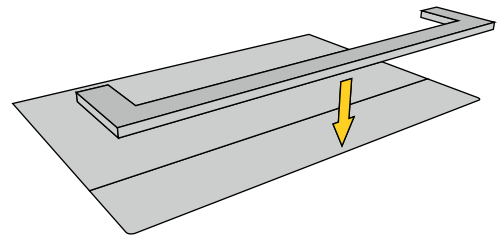


6. Take the three packers from the last step and glue them on top of one another to form the roof curb.




7. Detach the Back Wall & Roof component and lay it face up on your work surface.

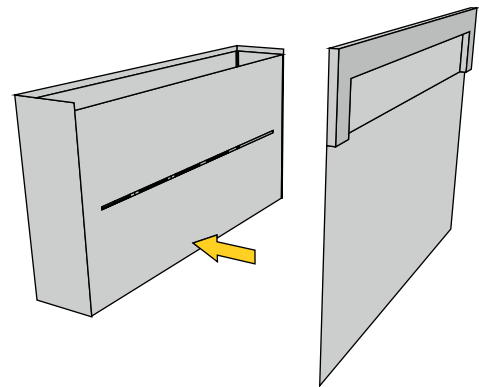
 Then, glue the roof curb to the roof.



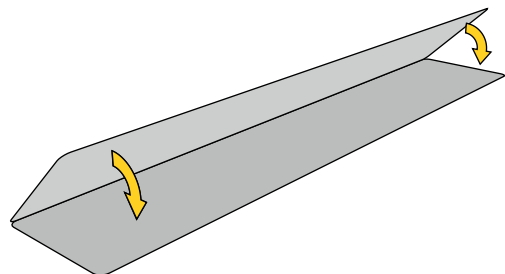
8. Glue the Back Wall to the Inner Wall, ensuring the bottom of each wall are aligned.

 The Back Wall should sit flush between the two outer side walls.

Do not glue the roof to the walls just yet as you will need access to the inside to position the floors.



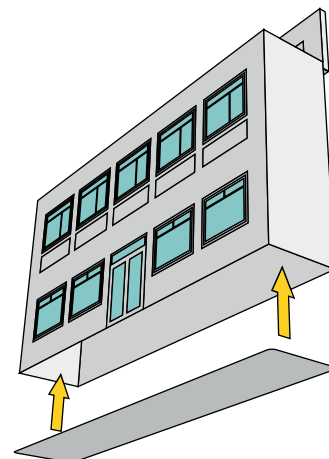
9. Detach the Ground Floor. Fold it along the crease line and glue together.



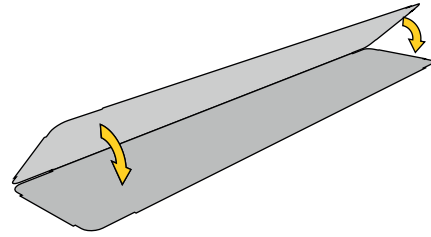
10. Apply a bead of glue around the edge of the floor and glue it into position.

Ensure you take your time with this step.

Applying even pressure where the floor meets the wall until it's semi-cured will ensure a firm hold.



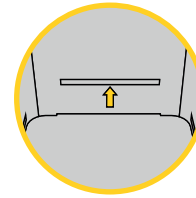
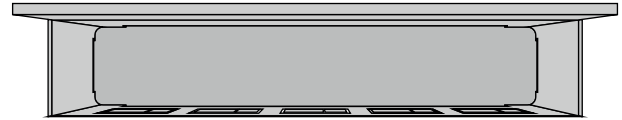
11. Detach the First Floor. Fold it along the crease line and glue together.



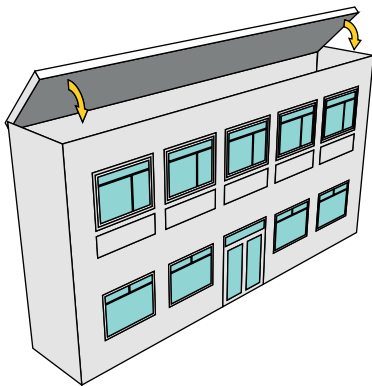
12. Locate the notches on the inner walls (x4) and apply glue inside each one.

Carefully lower the First Floor into the building, until the tabs on the floor align with the notches on the wall.

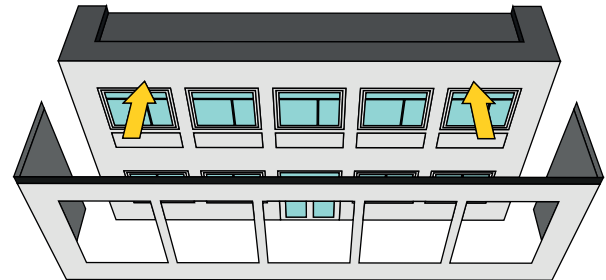
Apply even pressure from the outside until the glue has semi-cured.



13. Apply a bead of glue around the outer side of the roof kerb. Then, carefully position it on the inside of the wall, ensuring that the roof cap is flush with the top of the wall.



14. Detach the Cladding and fold it along the crease lines. Then, glue the Cladding to the building.



You have now completed the Low Relief Office Block. We hope you enjoyed and successfully built the kit! To view our other card kits, more products and find your local stockist, visit [www.atdmodels.co.uk](http://www.atdmodels.co.uk)

We'd love to see photos of your finished models. Please send them to [enquiries@atdmodels.co.uk](mailto:enquiries@atdmodels.co.uk) for a chance to be featured on our social media pages.