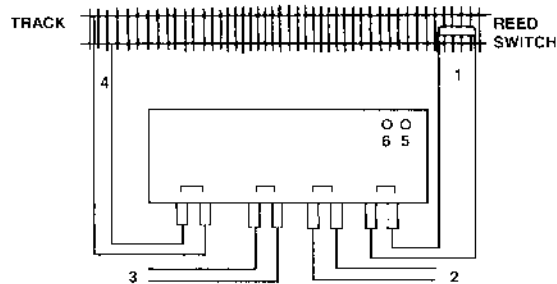


OPERATING INSTRUCTIONS FOR GAUGEMASTER SS2-STATION STOP

This unit provides an automatic stop facility with stop and start requiring only one reed switch to be installed.

Install the reed switch at the point at which the locomotive is to start slowing down. Take into account that it takes approximately 5 seconds to slow down to a halt.

Disconnect any previous wires from the controller to the track and then connect as follows:-



1. Reed switch at start of slow down point.
2. 16v A.C. input from transformer. See below.
3. +/- from controller when in forward position.
4. +/- to track to obtain required direction.
5. Waiting time adjustment
6. Deceleration rate adjustment

Affix magnet to underside of locomotive. Ensure it clears the reed switch fitted on the track. Place the locomotive just after the reed switch and then run it with the controller in the forward position. If the locomotive moves in the wrong direction, reverse the wires from the terminals marked track. Allow the locomotive to run a complete circuit, as it passes over the reed switch it will start to slow down, taking approximately 5 seconds to come to rest.

After approximately 20 seconds (Factory set) the locomotive will start to move off. The period at rest can be adjusted between approximately 10 and 60 seconds. To adjust the period at rest locate a small flat screwdriver in the screw at position marked (5) by pushing it through the label (see diagram above). Turning the screw clockwise will shorten the period at rest. Turning the screw anti-clockwise will increase the period at rest. Fine tuning of the locomotive stop position can be achieved and relocation of the reed switch avoided using adjustment of the rate of deceleration at position marked (6) (see diagram above).

Once the locomotive has restarted a slight increase in speed may occur after a few seconds. This indicates that the unit has reset and is ready for another operation.

The unit is only effective in one direction. Reversing the controller will bypass the operation.

TIME DELAY: Variable 10-60 seconds approximately.

INPUT VOLTAGE: 16v A.C. Maximum. Recommend Gaugemaster T1 or M1.

SWITCHING CAPABILITY: For motors up to 12v D.C. at 1.5 amps.

**NOT SUITABLE FOR CHILDREN UNDER 14 YEARS
UNLESS SUPERVISED BY AN ADULT.**

FOR INDOOR USE ONLY

A catalogue of the full range of Gaugemaster products is available.

GAUGEMASTER CONTROLS PLC

GAUGEMASTER HOUSE, FORD ROAD, ARUNDEL, W.SUSSEX, BN18 0BN, ENGLAND.

TEL: 01903 884321. FAX: 01903 884377